

DEVELOPMENT SCIENCES: Innovation & Technology

TITLE

Machine Learning: Detect Tumors in Mouse Models of Lung Cancer

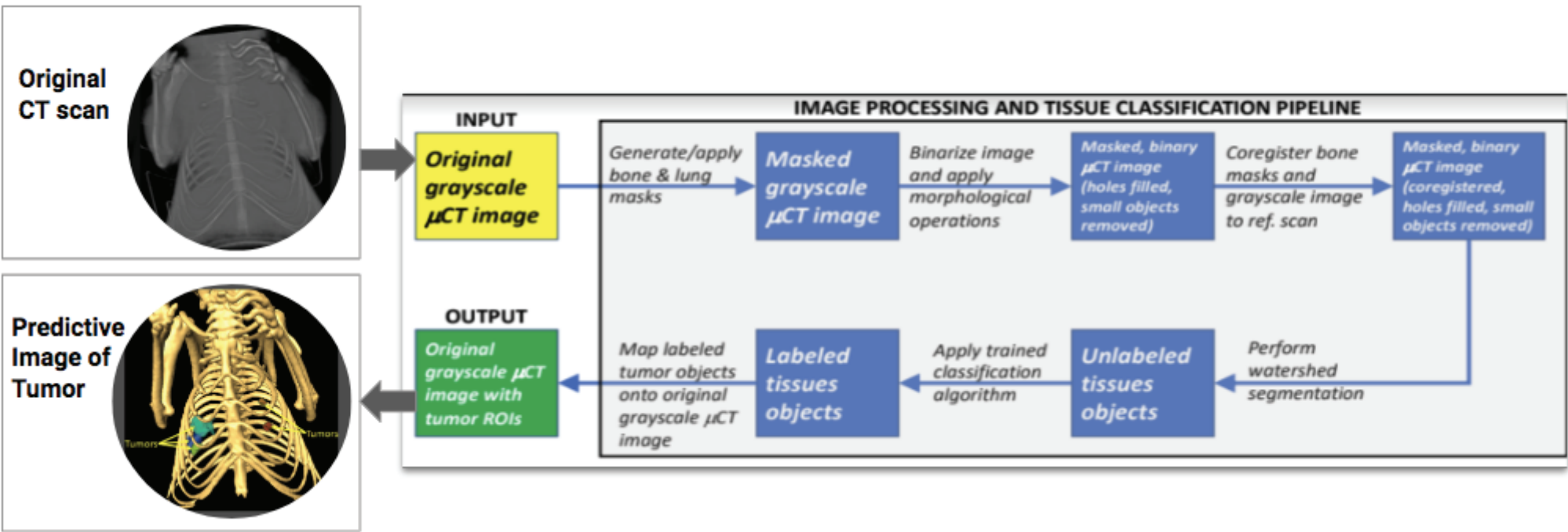
SUMMARY

Machine learning and deep learning used to build an image processing pipeline which can be used to automatically detect tumors in mouse models of lung cancer.

The effort was initiated as a collaboration between PTPK and BMI and currently includes the PHC imaging group, who will provide deep learning tools.

IMPACT

- Will significantly decrease the time it takes to produce an image
- Decreases intra/inter-reader variability and reader bias (i.e., human error and variability associated with manual processing of scans)



CONTACT

Greg Ferl, PTPK
ferl.gregory@gene.com

